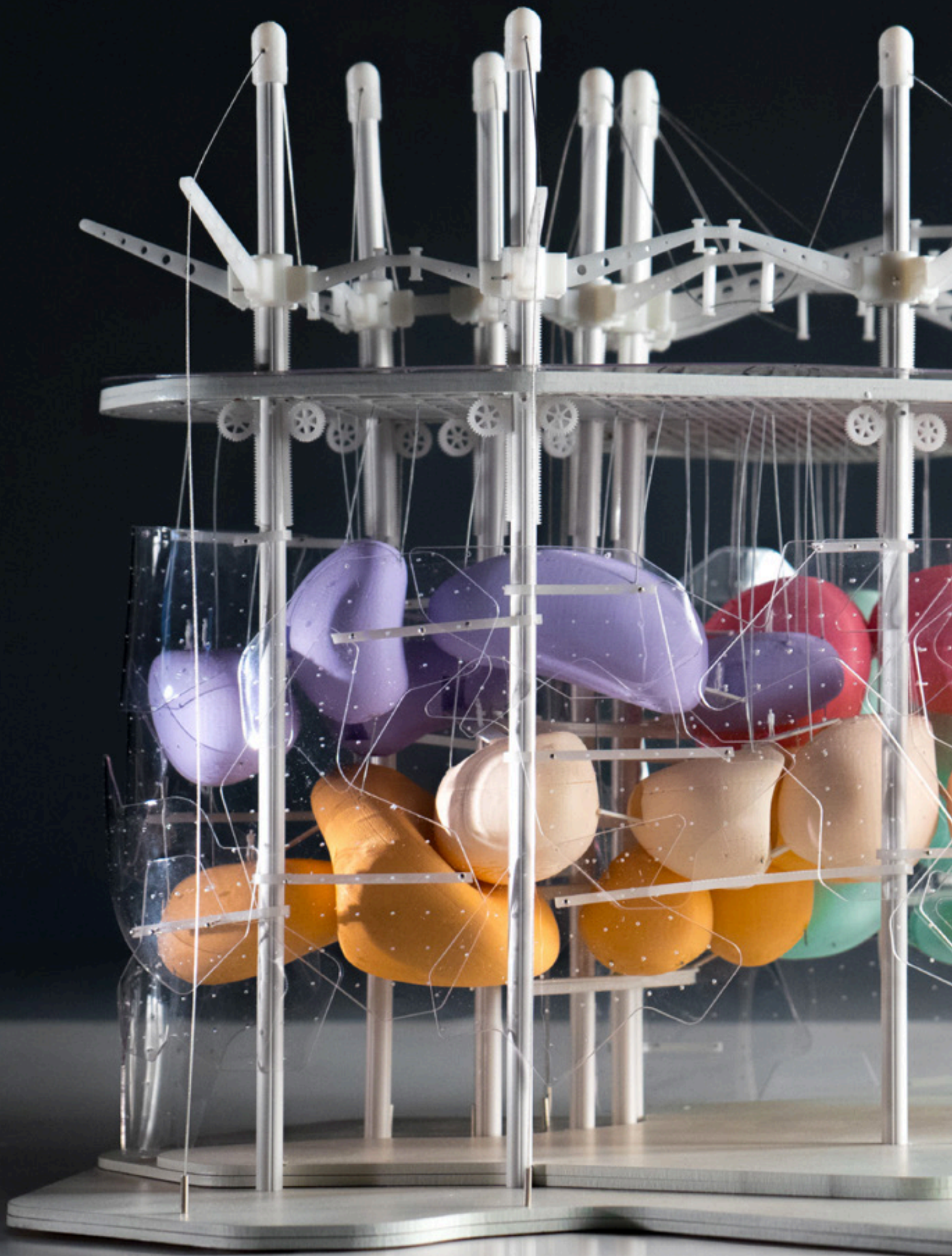




CONFLUENCE

Institute for
Innovation and
Creative Strategies
in Architecture





It is fundamental today to completely rethink the teaching of architecture because it can no longer be limited to only professional and specialist education.

It is a discipline that opens up to the world, offering a perspective on the world and the ability to act in the world.

Confluence Institute not only incorporates new visions for and of society but also embraces all contemporary methods and tools related to creation, production, and communication.

Architecture needs a more humanistic ambition.

Odile Decq

23

students have been graduated since 2016.

87

Internationally recognized personalities have taught at Confluence since 2014.

3

administrative executives ensure the direction, teaching and management of the school.

45

students are currently enrolled at Confluence. Growing slowly since its creation, the school aims to reach 150 students within five years.



10

Teachers constitute the recurring teaching corpus.

WHO ARE WE ?

Confluence, Institute for Innovation and Creative Strategies in Architecture, is a private higher education institution registered with the Academy of Paris under the number UAI 756198E.

Confluence is registered with the rectorate of Paris as a private architecture school, integrated into the Student Information Monitoring System (SISE), and collects the Student Life and Campus Contribution (CVEC) on behalf of CROUS.

The school was founded in Lyon in 2014 and relocated to Paris in 2019. It has been entirely self-financed since its inception.

Its two degrees are accredited by the Royal Institute of British Architects (RIBA) since 2017. Accreditation procedures in other countries are currently underway.

OUR SPECIFICITY

We are an international school of architecture and the only one in France. We are an experimental school in more than one way: as a private institution, through our unique and constantly evolving pedagogy, through our organization centered around and for students, and completely responsive to their needs, and through the diversity of themes studied that are renewed each semester. We are internationally recognized for our uniqueness and experimental approach to education.

OUR OBJECTIVE

Bring forth the actors of tomorrow from architecture conceived as a broad discipline that embraces differences with kindness. To nurture these individuals as thinking, free, and critical beings, committed individuals capable and proud of envisioning the world, helping it renew itself, and providing assistance to enable people to live better. To approach architecture with a humanistic perspective on the society around us and the one to come. But also, to have the courage to assert what one believes in and to see ideas through to their realization.



Odile Decq is an internationally recognized French architect and urban planner. Awarded the Golden Lion at the Venice Architecture Biennale in 1996, she has designed several buildings that have left a mark on contemporary architecture, such as the MACRO, Museum of Contemporary Art in Rome, and the administrative center of Banque Populaire de l'Ouest. Also deeply committed as an educator for over 30 years, she founded the Confluence Institute for Innovation and Creative Strategies in Architecture, a new architecture school, in 2014.

In 2017, she received the Architizer Lifetime Achievement Award for her pioneering work, dedication, and contribution to the architectural discourse.

In France, Odile Decq is a Commander of the Order of Merit, a Knight of the Legion of Honour, and a Commander of the Order of Arts and Letters.

Engaged in teaching since the early '90s, Odile Decq has held numerous positions as a guest lecturer worldwide, including at Harvard, Columbia, Bartlett, SCI Arc, the Art Institute of Chicago, Cincinnati, TU Vienna, Kunstakademie in Düsseldorf, the Royal Institute of Art in Stockholm, and the Ecole Spéciale d'Architecture (ESA) in Paris for 15 years, which she later directed for 5 years.

These varied experiences have given Odile Decq a profound understanding of architectural education in France and beyond. Over time and through her encounters, she has developed her own vision, convinced that architectural training should not be limited to professional or specialized education; it is a discipline that opens up to the world, a way of seeing the world, and an ability to act with new visions of society. This conviction led her to establish a new school.

A NEW SCHOOL

Why establish a school today?:

In 2012, Odile Decq stepped down from her position as the director of the Ecole Spéciale d'Architecture (ESA) and put forth the idea that the teaching of the discipline needs to be rethought, as it is often hindered by a strict institutional framework that is not conducive to change.

Initially joined by a small group of architects and internationally recognized educators, driven by the desire to reconstruct architectural pedagogy, Odile Decq deemed the moment opportune to create a new institution. Its mission was to change both the philosophy and methods of architectural education and research. This initiative culminated in 2014 with the establishment of a new place for architecture: CONFLUENCE Institute.

The school has since developed new visions for society and incorporated new tools of communication, design, and creation to better prepare its students for today's world and, more importantly, for the world of tomorrow.





MANIFESTO

In a society where all productions subtly tend to standardize, disregarding any cultural, historical, or social particularities, and as everyday architecture grapples with standards imposed by the industry and regulations initiated by political powers, it seems essential to create a new place for architecture in the world.

Architecture should no longer be confined to merely professional training. It is crucial to ensure that architectural education develops knowledge and means to address world problems far beyond the built environment. There is a pressing need to return to a more comprehensive and humanistic ambition.

CONFLUENCE is an open, alternative, international, collaborative, and innovative education for 21st-century architecture. Founded radically and evolvingly on experimentation, transversality, and research, CONFLUENCE aims to:

- Construct a fresh perspective on architecture at the intersection of disciplines.
- Cross paths with prospective and experimental visions.
- Foster an appetite for engagement.
- Generate unpredictable alternatives.
- Resist the standardization of productions and imposed standards.
- Question and surpass the implicit limits of architecture.

The future of architecture lies in the education of individuals who are:

- Truly rooted in the contemporary world, increasingly challenging to grasp, and equipped with the keys to analyze, understand, and act within it.
- Capable of agile navigation through a multitude of knowledge and skills, both locally and globally, and adept at collaborative work.
- Thinkers, free and critical, engaged with society and active participants in a dynamic and forward-looking vision of the future.



Sir Peter Cook, founder of ARCHIGRAM, has led the Institute for Contemporary Art (London) and the Bartlett School of Architecture (UCL, London). He is also the founder of the CRAB agency (London).

“**Confluence is a rare bird: inspired by the dynamism, personality, and talent of its director, Odile Decq. Each student benefits from the special attention of the contributors several times throughout the week.**”



Lina Ghotmeh, architect, co-founder of the DGT agency (Paris).

“**I believe that Confluence is a place where one can truly innovate while being rooted in contemporary reality. It is the very philosophy of the school that allows for it.**”



Clément Chapalain (5th year, Cycle 2):

“**Since I’ve been at Confluence, I’ve become aware of the role of an architect in the contemporary city. The school is located in the heart of Paris, and as future architects, it allows us to question the city of tomorrow and understand the context in which we will act.**”



Omar Saad
(3rd year - Cycle 1):

“**What is interesting about this school is the multidisciplinary team. It’s not just architects who come to teach, but also artists, philosophers, historians, engineers... Architecture is a field in constant interaction with numerous other disciplines.**”

THEY TALK ABOUT THE SCHOOL



Bernard Tschumi, architect, has led the Graduate School of Architecture, Planning, and Preservation at Columbia University (New York).

“I want to express my strong support for this school (...) It is important to support such schools and give them a status. The entire society will benefit from it.”



“**Joséphine Bourat** (4th year, Cycle 2):

It's a school that trusts its students, supports us in our projects, and encourages us in our own research. It has allowed me to assert myself and take a stand in this dynamic society.

”



Antoine Picon, research director at Harvard Graduate School of Design (Cambridge, USA), architect, co-founder of the DGT agency (Paris).

“A stimulus for evolving the entire French architectural education system by offering a particularly necessary flexibility today and facilitating experimental approaches.”



Meriem Benkirane (1st year, Cycle 1):

“Confluence school has taught me to work independently and develop new techniques using technologies and tools provided, such as 3D printing and digital cutting.”

”

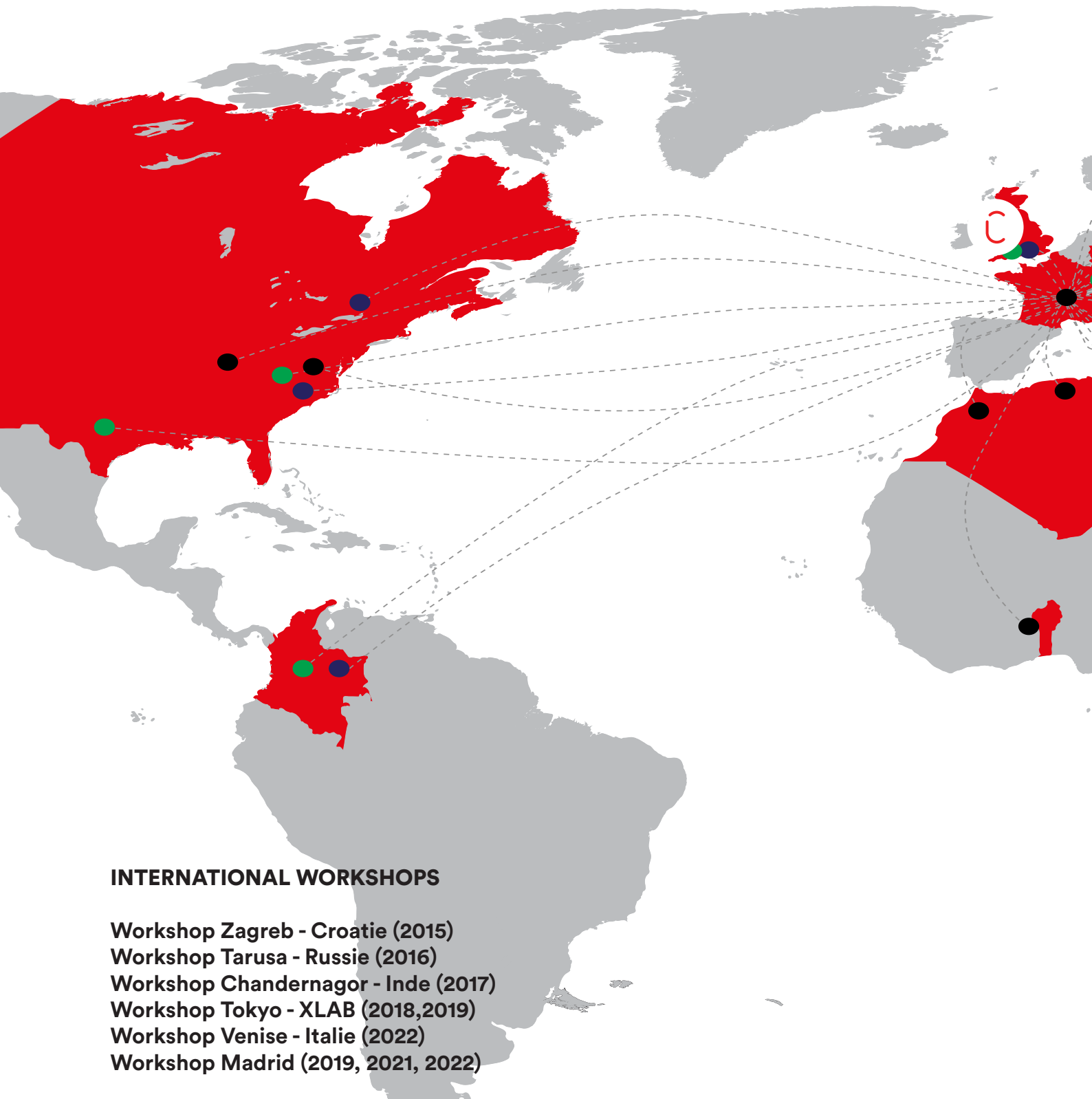


Carin Smuts, founder of the CS studio Architects (Cape Town).

“The world is changing rapidly. Confluence brings the necessary change we need in our approach.”

”

”



INTERNATIONAL WORKSHOPS

- Workshop Zagreb - Croatie (2015)
- Workshop Tarusa - Russie (2016)
- Workshop Chandernagor - Inde (2017)
- Workshop Tokyo - XLAB (2018,2019)
- Workshop Venise - Italie (2022)
- Workshop Madrid (2019, 2021, 2022)



Biennale de Venise - 2022



Fête des lumières - Lyon 2017



Biennale de la danse - Lyon 2016

AN INTERNATIONAL SCHOOL

International and independent, CONFLUENCE is based in Paris, a European capital with a strong international presence.

Teaching at CONFLUENCE is conducted in English. The cosmopolitan nature of the school strengthens its ambition to become the first international architecture school in France.



51%
International professors



75%
international students

PARTNERSHIPS

ULiège - Belgium

MIT - USA

Münster University - Allemagne

Leicester School of Architecture - GB

Manchester University - GB

MArch Moscou Russie

Oris House of Architecture - Croatie

Jadhavpur University- Inde

Unversité IUAV - Italie

Berlin International – Allemagne



Chandernagor - India 2017



Workshop Madrid - Lyon 2020



Confluence, anchored in the world's economy, is a place of synergies and hybridization: Architects, critics, artists, thinkers, philosophers, filmmakers, scientists, engineers, and industrialists collaborate, sharing their knowledge and discoveries.

To act within and with architecture is not only to master a set of knowledge and possess the necessary skills to create and lead a project, but it also involves:

- Having analytical and conceptualization skills;
- Being able to take a stance in complex situations;
- Being engaged in contemporary issues and looking towards the future;
- Grasping complex situations and projects;
- Integrating and leading multidisciplinary teams;
- Innovating and contributing to the advancement of techniques;
- Embracing the world and the uniqueness of each culture;
- Being willing to take risks and having an appetite for discovery.
- Resisting imposed limits by constantly questioning the status quo.

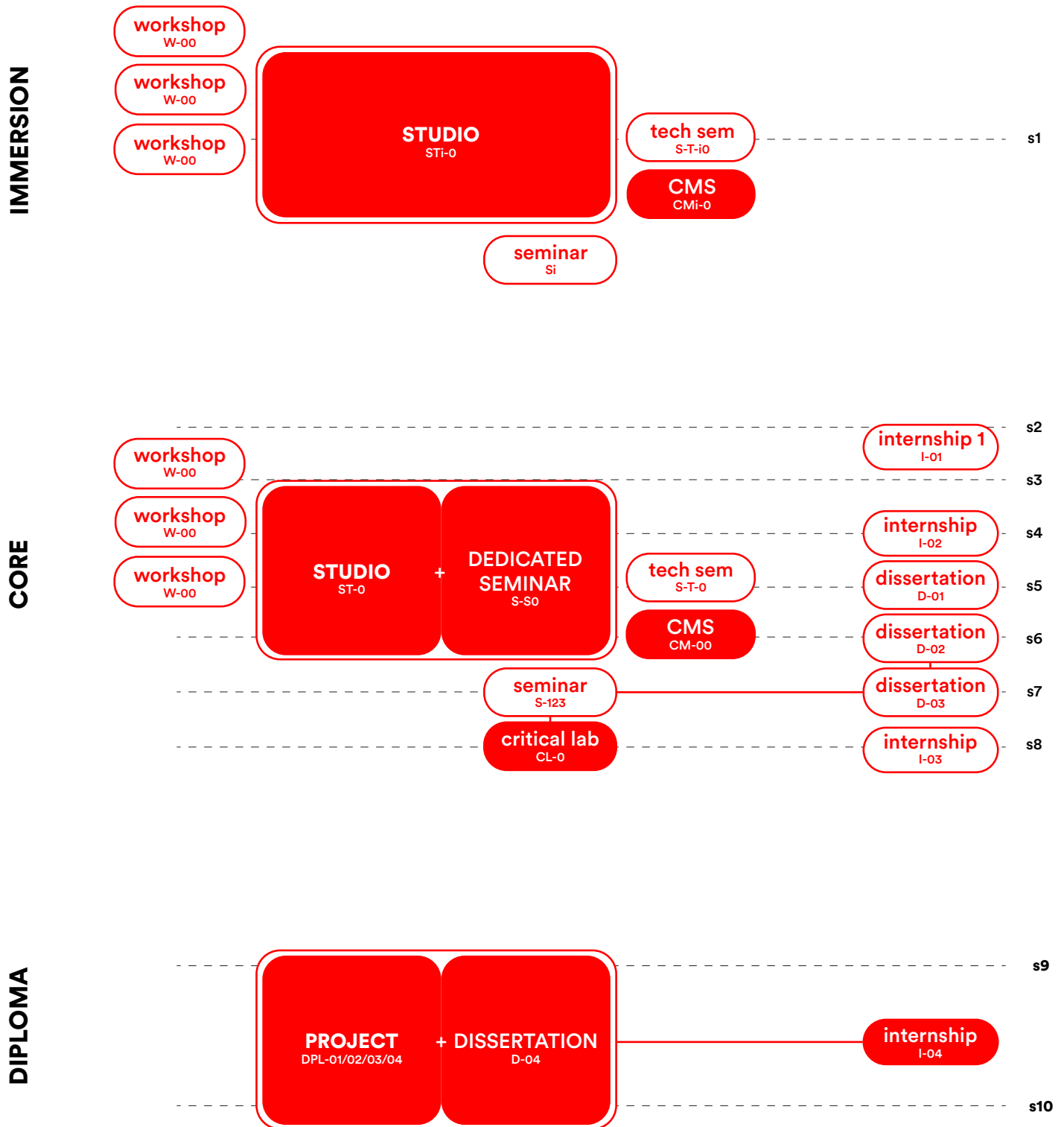
ARCHITECTURE THINKING

Confluence preserves its flexibility and adapts its educational program to meet the needs of students and create a community of interest. Far from being a place where architecture is simply taught, the school becomes a space where architecture is used to explore and experiment with the world. It becomes a hub for reflecting on architectural architecture.

Drawing on its diverse array of guest professors, the school develops a collective exploration each semester around contemporary issues such as:

2023	_	The reconstruction of Ukrainian cities
2022	_	New domestic spaces - virtual and nomadic
2021	_	The Sea, the future of the Earth
2020	_	The 21st district of Paris
2019	_	The moon village
2018	_	Limits and Borders
2017	_	Migrations
2016	_	The Anthropocene
2015	_	Human Environment

Course structure



design project : 58%
 professional skills : 23%

PROGRAM

The education at Confluence spans over 5 years following the European system.

Entry to the school can be at the undergraduate or graduate level.

The school operates on a semester basis and welcomes new students twice a year. Each semester, new students can join at any level (except for the graduation year).

The education is organized vertically to encourage collaboration and interaction among students from the 1st to the 4th year.

Throughout the program, the student builds their own course of study, choosing a studio, 2 seminars, and 3 workshops each semester. These choices lead the student to create a unique and personal learning path to enhance their autonomy and project culture.

A designated mentor advises and personally assists the student in developing their path, selecting project research topics, choosing shared courses each semester, and finding internships and personal projects.

One of the distinctive features of education at Confluence is its emphasis on professional experiences and various entrepreneurial projects.

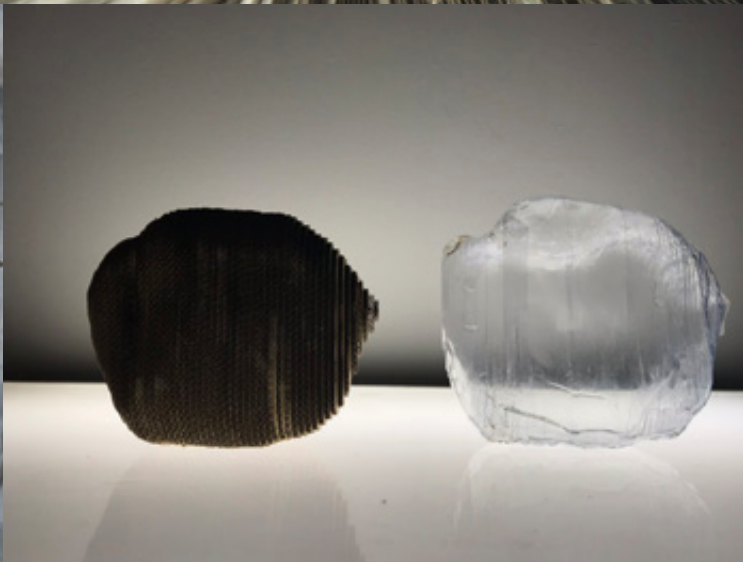
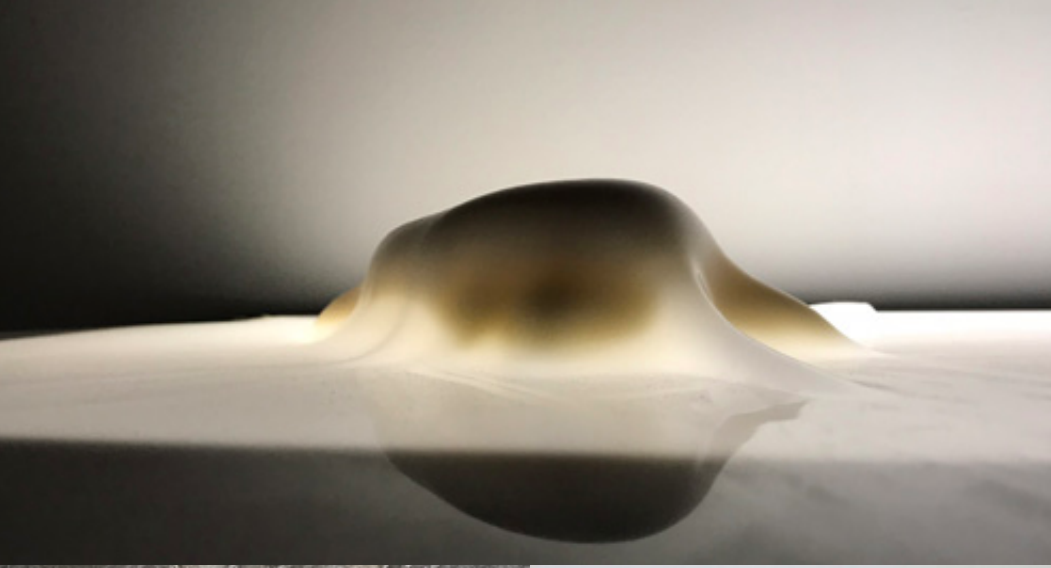
THE AWARDED DEGREES

After 3 years of study at Confluence (end of Cycle 1):

Architecture Confluence Degree Level A, which is validated at RIBA Part 1 level by the Royal Institute of British Architects (RIBA)

After 5 years of study at Confluence (end of Cycle 2):

Architecture Confluence Degree Level B, which is validated at RIBA Part 2 level by the Royal Institute of British Architects (RIBA)



RESEARCH CREATION DESIGN

The spaces at Confluence are designed to be open and reconfigurable: educational spaces, workshops, living areas, experimentation laboratories between the real and the virtual, between thinking and doing. The architectural organization reflects the pedagogical strategy of the school. Each space has its own identity and is dedicated to one of the school's activities.

CREATIVE MAKER SPACE

At the heart of the school, the Creative Maker Space is the place for the realization and concrete fabrication of projects. Designed as a laboratory, this space equipped with state-of-the-art digital fabrication technologies is available to students every day and at all hours for the implementation of their own projects. Here, contemporary digital tools are fully integrated into the creative process, surpassing traditional model-making practices. Instead, technology should enable the definition of an entirely new field of experimentation in form and processes.

INTEGRATED RESEARCH SPACE

Research is the guiding element of Confluence's program, with teaching disseminated in various forms, allowing students to encounter different types of research and their applications in classes and seminars.

The specificity of Confluence's research center is to establish transdisciplinary research linked with the school's workshops. These research efforts aim to create interfaces between fundamental and applied research to enable existing modes of thought to move beyond their institutional model, engage in different types of relationships and discourses, and collectively think differently. The conducted research takes various forms (academic, applied, direct action, internships, scientific) with the goal of connecting Confluence students with researchers, institutions, or companies.

**One desk
per student**

**A school opened
24H/24
7D/7**

**A self service
FAB LAB**



[BLAST]

Biological Laboratory of Architecture and Sensitive Technologies (Londres)



Martin Detoef and Pierre de Pingon founded the [BLAST] studio upon graduating from Confluence.

The “Biological Laboratory of Architecture and Sensitive Technologies” [BLAST] explores the potential relationships between new technologies and living organisms to develop new processes for architectural design and creation.



Digital design and fabrication tools are at the core of the group’s experiments in design, scenography, and architecture projects.

[BLAST] has created a new ecosystem in the city that recycles urban waste into sustainable objects and furniture using living organisms.

www.blast-studio.com



AFTER CONFLUENCE ?

Since its establishment, the school has been tracking the paths of its alumni. These graduates have encountered no difficulties integrating into highly diversified professional environments.

Graduated from Confluence since 2016:

- 2022 _ Allal Lemseffer works in a scenography firm in Paris (France)
- 2022 _ Max Natanek leads collaborative architecture projects in Chicago (USA)
- 2022 _ Mary Ala is an architect-researcher in London (UK)
- 2022 _ Lucia Landivar works in an architecture firm in Paris (France)
- 2022 _ Meriem Benkirane works in an interior architecture firm in Paris (France)
- 2022 _ Adrien Espejo works in an architecture firm in Paris (France)
- 2021 _ Advait Patel founded his architecture firm in India
- 2021 _ Hugo Belhassem works in an architecture firm in Paris (France)
- 2021 _ Kevin Ederhy-Maille works in an architecture firm in Montreal (Canada)
- 2021 _ Anouchka Atouvoefoun has established her ready-to-wear studio in Paris (France)
- 2021 _ Jhila Prentis leads humanitarian projects in Paris (France)
- 2020 _ Thomas Deslaviere works in an architecture firm in Paris (France)
- 2020 _ Ophélie Feredie works in an architecture firm in Annecy (France)
- 2019 _ Maxime Baudoncq teaches drawing and architecture in Orleans (France)
- 2019 _ Joséphine Bourat works in an architecture firm in Paris (France)
- 2017 _ Clément Chapalain founded his architecture firm in Paris (France)
- 2017 _ Pierre De Pingon co-founded “blast” - 3D printing technology in London (UK)
- 2016 _ Charles Ober founded his architecture firm in Paris (France)
- 2016 _ Domitille Roy founded her architecture firm in Paris (France)
- 2016 _ Martin Detoef co-founded “blast” - 3D printing technology in London (UK)
- 2016 _ Gerolamo Gnecchi-Ruscione is an artist-researcher in London (UK)
- 2016 _ Francesco Messina founded his design company in Milan (Italy)
- 2016 _ Nhaila Chin Foo founded her architecture firm in Papeete (French Polynesia)



LECTURES

Oris House of Architecture Lectures,
 Dubrovnik (2014)
 European Lab, Lyon (2014)
 Manchester University, Manchester (2014)
 What's next? Arkitera Architecture
 Center, Istanbul (2014)
 State Academy of Art and Design,
 Stuttgart (2014)
 International Architecture Education
 Summit, (IAES) Singapore (2015)
 "Drawing and City", Polytechnique de
 Milan (2015)
 "REDS, Resilient Ecological Design
 Strategies" Symposium, Université de
 Trento (2015)
 "Réseau Rhône Alpes" Lyon (2015)
 "Creative Strategies an Integrated
 Systems" Séminaire, Calcuta , organisé
 par l'IFI en Inde (2015)
 Universidad del Norte, Barranquilla (2017)
 Leicester School (2018)
 Tongji University, Shanghai (2018)

ACSA, Association of Collegiate Schools
 of Architecture "The Ethical Imperative"
 Denver (2018)
 Foundation Stefana Kurylowicza, Varsovie
 (2018)
 Université de McGill, Montréal (2018)
 Université Polytechnique de Catalogne,
 Barcelone (2019)
 "Draw love build-on future of the
 architectural profession" M9 Museum,
 Venise (2021)
 Arts University of Bournemouth (2021)
 "Urbanistic Strategies in Post War
 Urbanistic Renovation, STEM IS FEM,
 Ukraine (2021)

PUBLICATIONS

Building the Future with Architecture in
 Architectural Design (2021)
 Progettare, Italie 17/02/2014
 Le Moniteur, France 19/02/2014
 Orientations, France 20/02/2014
 Batiactu, France 21/02/2014
 Digischool media, France 21/02/2014

RENOWN



Le Monde, France 21/02/2014
Urban news, France 22/02/2014
Quotidien de l'art, France 24/02/2014
Archdaily, Web 24/02/2014
Lyon capitale, France 25/02/2014
Le journal des Arts, France 25/02/2014
Rue 89, France 26/02/2014
ArchDaily, web 04/03/2014
Le courrier de l'architecte, France 19/03/2014
Designboom, Web 22/03/2014
Archicree, France 03/2014
Archidea, Ukraine 04/2014
World Architecture Community, 07/04/2014
E Archit, UK 10/04/2014
Green building magazine, Italie 18/04/2014
Madame Figaro, France 04/2014
Urrukia.com, Web, 12/04/2014
L'Arca International, Italie 05/2014
Oris magazine : publication web 09/05/2014
Mies magazine : publication web 15/05/2014
Corriere della sera 15/05/2014
L'étudiant : 19/02/2014
La Tribune, 02/06/2014

Le Moniteur, 11/06/2014
Archicool.com, web, 12/07/2014
Surface Magazine, USA 06/2014
Azure Magazine, USA 2014

INTERVIEWS

WW.MIESTV.FR, Web 05/2014
19/20 France 3 Rhone Alpes, 12/06/2014
France Culture, Le 5/7, « Libérez l'architecture, émission du 08/07/2014
France Culture, « Variations autour de l'architecture, émission du 28/07/2014
City Scape documentaire, 2015
France Culture – émission ping pong "Archi-punk", Paris, 2017
City Scape documentaire, 01/2017
France Inter – émission Les Bords de mer « L'apprentissage de l'architecture selon Odile Decq » Paris, 15/07/2017
Dans la Gaule d'Antoine, documentaire Antoine de Caunes 06/2018
Documentaire Arte « Ma ville - Lyon » 04/2019
Le 7/9 de France Inter, 30/07/2019
Podcast.archi « hors concours » Paris, 02/03/2021
Bretons sur Seine, 07/04/2021



THEY SUPPORT CONFLUENCE

Hitoshi Abe _ Founder of Hitoshi Abe Studio, Chair of Department of Architecture and Urban Design University of California, Los Angeles, USA.

Beatriz Colomina_ Professor of History and Theory of Architecture, Director of Graduate Studies, Ph.D. Program Princeton University Princeton, USA.

Sir Peter Cook_ Co-Founder of Archigram, Former Director of the Institute of Contemporary Art and The Bartlett School UCL, London, UK.

Cynthia Davidson_ Director of Anyone Corporation, New York, USA.

Peter Eisenman_ Founder and Principal of Eisenman Architects Professor, Yale School of Architecture New York, NY.

Kristin Feireiss _ Founder and Director of Aedes Network Campus, Berlin, Germany.

Anna Heringer _ Founder of Studio Anna Heringer Honorary Professor, UNESCO Chair Earthen Architecture Laufen, Germany.

Dominique Hervieu _ General Director of Maison de la danse de Lyon, Artistic Director of the Biennale de la danse de Lyon, Lyon, France.

Francine M.J. Houben _ Founding Partner and Creative Director of Mecanoo Architecten Professor, Delft University of Technology, Delft, NL.

Spela Hudnik _ Founder of Monochrome Architects, Professor of the University of Ljubljana, Slovenia.

Irina Korobina _ Director of the Schusev State Museum of Architecture, Moscow, Russia.

Anupama Kundoo _ Founder of Anupama Kundoo Architect, Professor at the University of Queensland, Brisbane, Australia.

Xiangning Li Full _ Assistant Dean at the Tongji University College of Architecture and Urban Planning, Shanghai, China.

Kent Martinussen _ Director of the Danish Architecture Centre, Copenhagen, Denmark.

Eric Owen Moss _ Principal and Lead Designer of Eric Owen Moss Architects, Former Director of SCI-Arch, Los Angeles, USA.

Antoine Picon _ Professor of the History of Architecture and Technology, Co-Director of Doctoral Programs at Harvard GSD, Cambridge, USA.

Monica Ponce de Leon _ Founder of Monica Ponce de Leon Studio, Dean of the Taubman College, University of Michigan, Ann Arbor, USA.

Jacques Sautereau _ Former Director of Post-Master in Urban Mutations Ecole Spéciale d'Architecture, Paris, France.

Kazuo Sejima _ Founder of SANAA, Tokyo, Japan.

Carin Smuts _ Founder of CS Studio Architects, Cape Town, South Africa.

Aaron Sprecher _ Director of the McGill LIPHE Research Laboratory at the University School of Architecture Montreal, Canada.

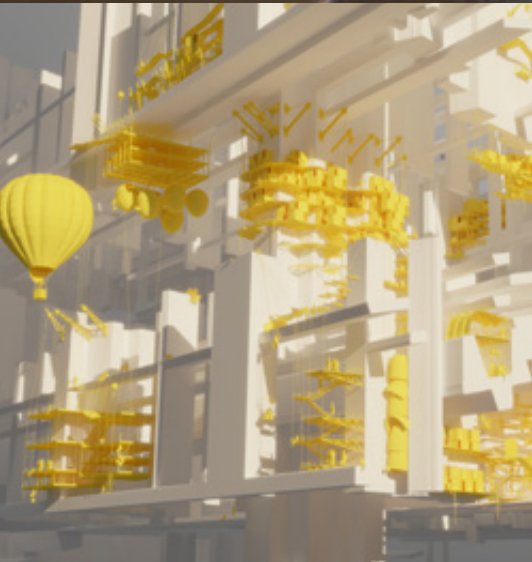
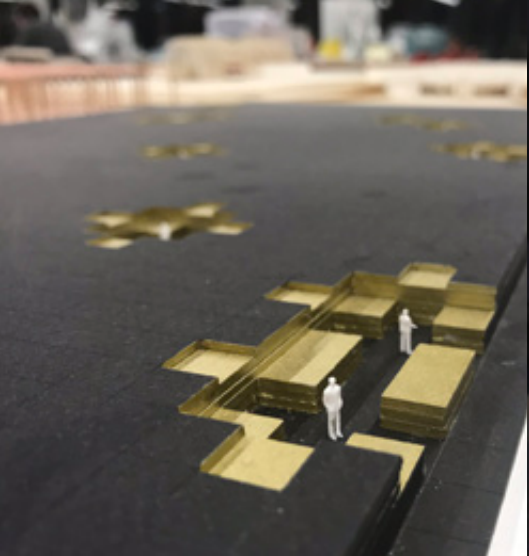
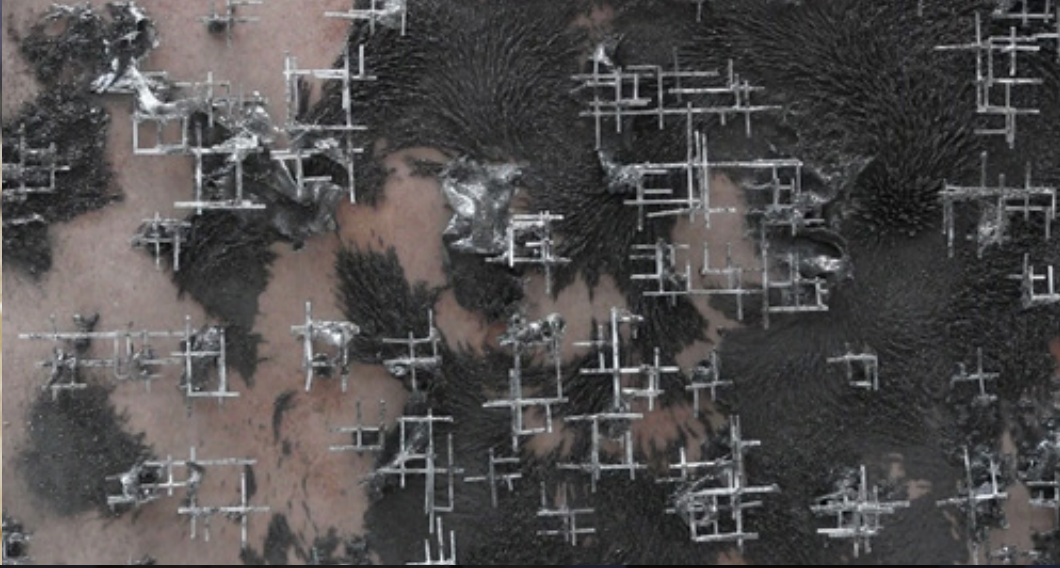
Benedetta Tagliabue _ Co-founder of Enric Miralles-Benedetta Tagliabue, EMBT Barcelona, Spain.

Georges Teyssot _ Professor of History and Theory at the Université Laval, Quebec City, Canada.

Martha Thorne _ Associate Dean for External Relations IE School of Architecture and Design Madrid, Spain.

Kjetil Trædal Thorsen _ Co-Founder of Snohetta, Professor of the Institute for Experimental Studies in Architecture, Oslo, Norway.

Sarah Whiting _ Founder and Partner of W, Dean of the Rice School of Architecture, Houston, USA



THEY TEACHING AT SCHOOL

Chandler Ahrens	Architecte	Etats Unis
Joel Andrianomearisoa	Artiste	Madagascar
Eric Aupol	Artiste	France
Elisabeth Bacon	Chercheur	France
Emmanuel Barrois	Artisan verrier	France
Michael Batalla	Poète	France
Maxime Baudoncq	Architecte	Belgique
Andrea Blum	Artiste	Etats Unis
Mathieu Bonardet	Artiste	France
Davy Brun	Chorégraphe	France
Reza Brun	Architecte	France
Alessandra Cianchetta	Architecte	Italie
Philippe Clément	Ingénieur	France
Tania Concko	Architecte	France
Peter Cook	Architecte	Royaume Uni
Cynthia Davidson	Ecrivain	Etats Unis
Camille de Gaulmyn	Ingénieure	France
Ricardo de Ostos	Architecte	Brésil
Bruno Dehan	Ingénieur	France
Martin Detoef	Architecte / Entrepreneur	Madagascar
Françoise Docquier	Curatrice / Auteure	France
Carole Douillard	Artiste	France
Emir Drahsan	Architecte	Turquie
Pierre Engel	Ingénieur	France
Davor Eres	Architecte	Serbie
Adrien Espejo	Architecte	Espagne
Didier Faustino	Architecte	France
Lukas Feireiss	Ecrivain	Allemagne
Harald Fernagu	Artiste	France
Georges Fessy	Photographe	France
Nicolas Floc'h	Artiste	France
Philippe Foliasson	Architecte	France
Colin Fournier	Architecte	Royaume Uni
Luca Galofaro	Architecte	Italie
Jeanne Gang	Architecte	Etats Unis
Gerolamo Gnechi	Architecte	Italie
Lina Gotmeh	Architecte	Liban
Nicolas Hannequin	Architecte	France
Spela Hudnik	Architecte	Slovénie
Michel Huet	Avocat	France
Karsten Hunek	Architecte	Allemagne
Mary Johnson	Chercheur	Etats Unis
Nathalie Junod Ponsard	Artiste	France
Jieun Kim	Architecte	Corée
Gaetan Kohler	Architecte	France
Anas Koubaiti	Architecte / Ingénieur / Urbaniste	France / Maroc
Anupama Kundoo	Architecte	Inde
Franco La Cecla	Anthropologue	Italie
Lionel Lemire	Architecte	France
Duncan Lewis	Architecte	Royaume Uni
Pierre Malinovsky	Ingénieur	France
Lionel Menard	Chorégraphe	France
Maurra Murray	Coach	Etats Unis
Charles Ober	Architecte	France
Théo Pagnon	Ingénieur	France
Brent Patterson	Enseignant / Chercheur	Etats Unis
Jhila Prentis	Architecte	Royaume Uni
Françoise Quardon	Artsite	France
Yael Reisner	Architecte	Israël
Domitille Roy	Architecte	France
Christian Ruby	Philosophe	France
Céline Saraiva	Critique	France
Jacques Sautereau	Architecte	France
Tom Shaked	Architecte	Israël
Thomas Sicouri	Architecte / Entrepreneur	France
Carin Smuts	Architecte	Afrique du Sud
Aaron Sprecher	Architecte	Belgique / Israël
Carl Fredrik Svenstedt	Architecte	Suède
Benedetta Tagliabue	Architecte	Espagne
David Tajman	Architecte	France
Philippe Trétiak	Critique	France
Marc Van Peteghem	Architecte navale	France
Juan Velasquez	Architecte lumière	Colombie
Julien Veraeghe	Docteur en Esthétique	France
Romain Viricel	Designer	France
Bostjan Vuga	Architecte	Slovénie
Beth Weinstein	Architecte	Etats Unis
Catherine Zaharia	Chercheur	France

CONF
LUEN
CE

Institute for
Innovation and
Creative Strategies
in Architecture

11 rue des arquebusiers 75003 Paris
contact@confluence.eu
Etablissement d'Enseignement Supérieur Privé